

Math Review for Unit 8 Math Test – Part 1

1. Give a definition or synonym for each term:

Mean = average

Median = middle

Mode = most often

Range = difference btw. endpoints

Extremes = endpoints

Quartile = 4 sections of box plot

Measures of Center = mean median mode

Interquartile Range = difference between Q1 & Q3

gap - space between data cluster & another datapoint

outlier - data point separated by a gap

2. Which of the following graphs shows more types of information than the others? Circle your answer.

stem-and-leaf plot

bar graph

box plot

circle graph

Explain what types of information you can get from that graph:

median, extremes, spread, range, %

3. What is the median of each stem-and leaf-plot?

A

Stem	Leaf
1	1 4 7
2	0 0 6
3	1 <u>6</u> 9
4	2 8 9 9
5	3 5

Median A = 36

B

Stem	Leaf
4	1 2 4 5
5	0 7
6	5 6 7 8
7	3 3 4 7 9
8	2 5 6

Median B = 67 $\frac{1}{2}$

6. There are 5 questions on the test that ask what is a good statistical question.

What makes a good statistical question?

~ 4-6
 allows you to make ranges of data
 (no yes/no or single answer questions)

Circle the following, if they are good statistical questions:

Who are your favorite music groups?

What are the ages of everyone in the movie theater?

Do you like pizza?

How many dvd's does Mark have?

What is the shortest dog at the dog show?

How many kids are buying school lunch?

How much rain fell in June?

What are the ages of students at SAA?

How many rooms are there in our school?

What are the heights of all the students on the baseball team?

What was the high temperature last month?

How many pets does Mr. Adams own?

How many pets are owned by all the students in our class?

How old is Sammi's parakeet?

What is my dog's favorite food?

Did Sarah's team win the first game?

How many points did she score in the game?

How many points did her team score?

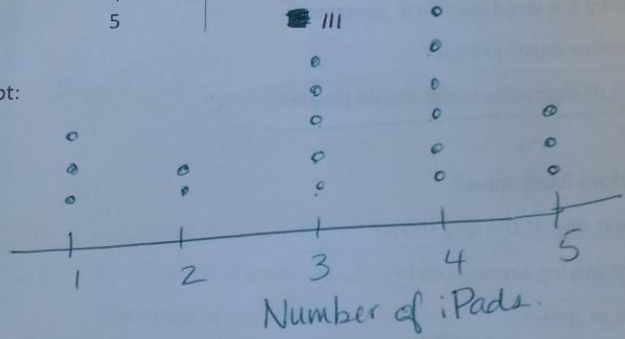
How many points did each player score?

7. Draw a dot plot from the following frequency table.

Give it the title "Number of iPads"

Number of iPads	Number of Teachers
1	III
2	II
3	IIII
4	IIII I
5	IIII

Dot Plot:



SHOWS

How many teachers have 3 or more iPads? 14

8. A set of data is shown. 3, 4, 4, 7, 7, 3, 4, 7, 7, 6, 7

3 3 4 4 4 6 7 7 7 7 9

What statement best describes the mode(s) of this data?

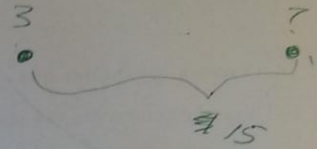
- a) The modes are 4, 7, and 9
- b) The modes are 4 and 7
- c) The mode is 7
- d) There are no modes

9. A set of data is shown. 3, 11, 4, 2, 7, 0, 8, 1, 5, 9, 6, 12

0 1 2 3 4 5 6 7 8 9 11 12

What statement best describes the mode(s) of this data?

- a) The modes are 4, 7, and 9
- b) The modes are 4 and 7
- c) The mode is 7
- d) There are no modes



10. What is the missing number in the data set, if the range is 15?

3, 5, 8, 13, 18

$$\begin{array}{r} 15 \\ + 3 \\ \hline 18 \end{array}$$

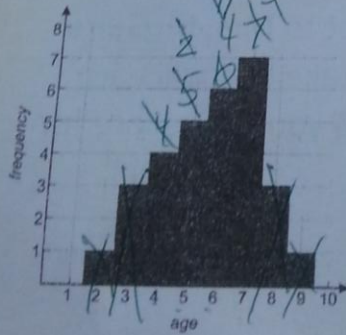
11. A set of data is shown 3 5 6 8 11 N
11, 5, 3, 6, 8, N

The range of the data set is 12. What is the value of N?

$$\begin{array}{r} 12 \\ + 3 \\ \hline 15 \end{array}$$

(15)

12. What is a possible median age for this group of people: 4, 6, or 9?



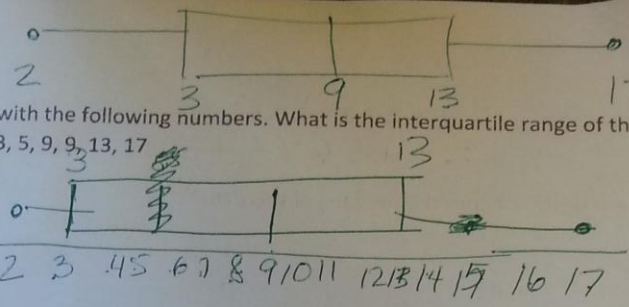
Why do you think so?

2, 3, 3, 3, 4, 4, 4, 4, 5, 5, 5, 5, 5
6, 6, 6, 6, 6, 6, 7, 7, 7, 7, 7, 7, 7
8, 8, 8, 9

What
 a) The
) The r
 The n
 There

13. Create a box plot with the following numbers. What is the interquartile range of the data set shown?

2, 3, 5, 9, 9, 13, 17



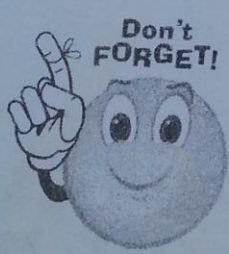
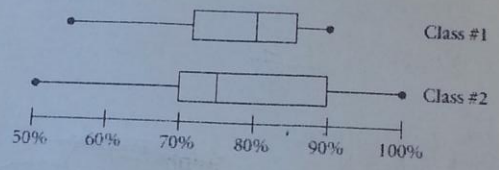
~~2~~
~~3~~
~~5~~
~~9~~
~~9~~
~~13~~
~~17~~

$IQR = 10$

14. Consider the double box plots showing the test scores of two different classes.

Tell how the scores are the same or different diff median, diff spread, diff range, diff quartiles, diff
 The top 25% of each class scored above what percent? Class 1 85% Class 2 90%

Algebra Scores



A parent signature and returning this review packet to Mrs. McGuire by the time you take test will earn you 3% added to your test score for this unit test

My student studied and/or explained these problems to me for at least 30 minutes.

Parent Signature: _____